

# 225 DOUBLE TOILET TISSUE PAPER HOLDER

CLEAN EASY INSTALLATION

sales@preferredbathinc.com  
www.preferredbathinc.com  
(336) 904-6248



## SOLID STAINLESS STEEL CONSTRUCTION

- 304 STAINLESS STEEL
- PRECISION CUT

### PART NUMBERS

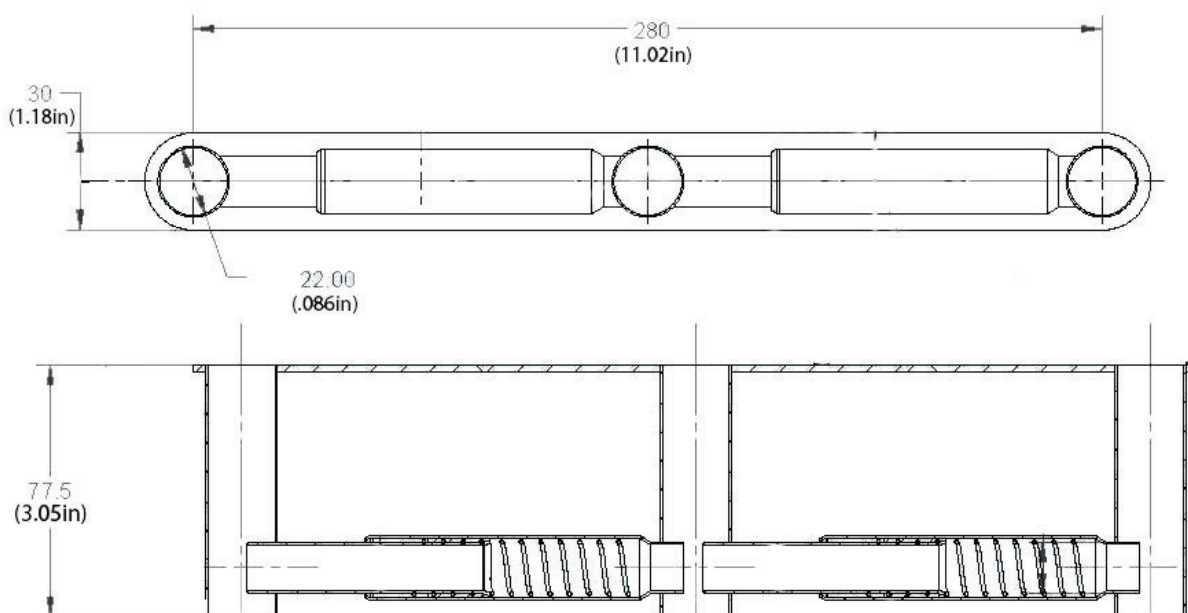
225-BP  
225-SS

### FINISH

BRIGHT POLISHED  
SATIN STAINLESS

## ALL HARDWARE INCLUDED

- 304 STAINLESS STEEL DOUBLE TOILET TISSUE PAPER HOLDER - 1
- CHROME PLATED PLASTIC TOILET TISSUE PAPER ROLLERS - 2
- STAINLESS STEEL MOUNTING HARDWARE AND WALL ANCHORS INCLUDED



## INSTALLATION:

Attach double toilet paper holder to wall with provided mounting hardware. Install tissue paper rollers.

**WOOD BLOCKING IS THE PREFERRED METHOD OF INSTALLATION**



### Limited Warranty:

Preferred Bath Accessories Inc. warrants to the purchaser that the product will be free from defects in material and workmanship. If the product does not comply with this warranty, Preferred Bath Accessories Inc. will repair or replace the product or, at Preferred Bath Accessories Inc's. option, refund the purchase price. The limited warranty period is for the lifetime of the product. Limitations on the Warranty: The warranty does not cover, normal wear and tear, product abuse, neglect, improper installation or maintenance. Purchaser Requirements: If this product does not meet Preferred Bath Accessories Inc's. warranty, return the product (postage prepaid) to the place of purchase with proof of purchase and a written claim briefly describing the defect. You may be required to provide other information or evidence of the defect.