

400-FD-LH-2622-PW3

L-SHAPED LEFT HAND FOLD DOWN SHOWER SEAT W/LEG SUPPORT

Construction

- 304-SS Frame
- Phenolic Top
- 3" Seat Slats

Benefits

- ADA Compliant
- Supports 500 lbs with proper installation
- Adjustable feet
- Easily folds up out of the way when not in use
- No assembly required

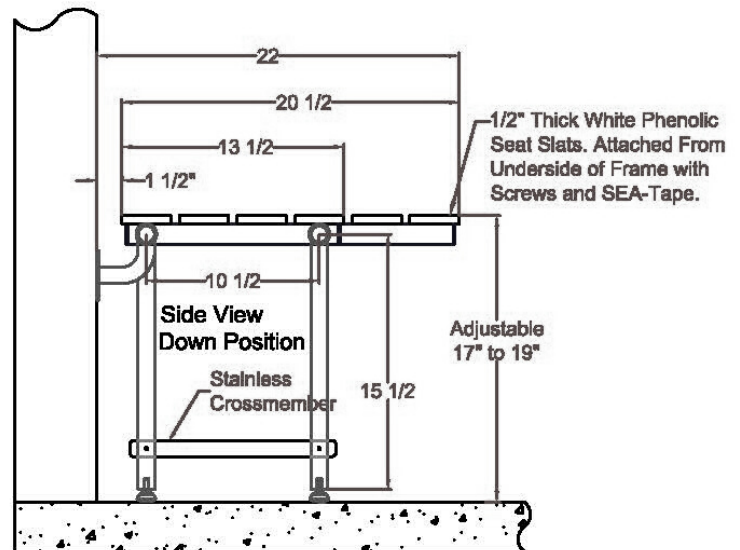
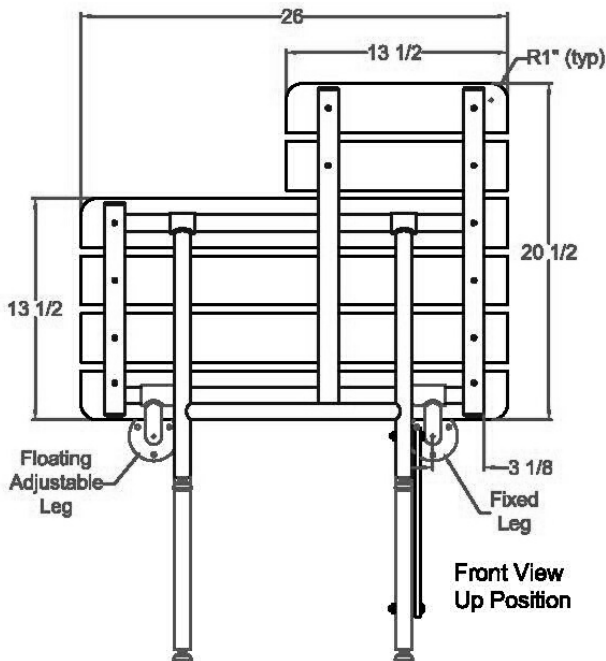
Installation

- Use frame to mark holes
- Use 304-SS screws to secure into wood blocking
- Adjust feet to proper height
- Installation hardware included

VERSABLE
VERSABLE
DESIGNS



26" x 22"



ENABLING
INDEPENDENCE

(877) 853-7816

sales@versabledesigns.com

WWW.VERSABLEDESIGNS.COM