

# 3000 PREFERRED TOWEL SHELF WITH 1 BAR

UPDATED TRADITIONAL STYLING

sales@preferredbathinc.com  
www.preferredbathinc.com  
(336) 904-6248



## ROUND TOWEL SHELF WITH 1 BAR

- NO ASSEMBLY IS REQUIRED THE TOWEL SHELF COMES COMPLETELY ASSEMBLED
- SUPERIOR STRONG DESIGN
- SAVES 95% OF INSTALLATION LABOR

PART NUMBERS

3012-24BP

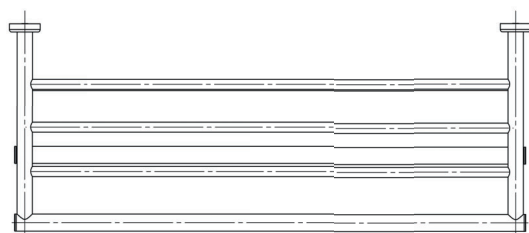
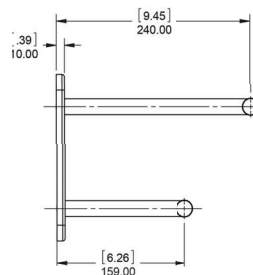
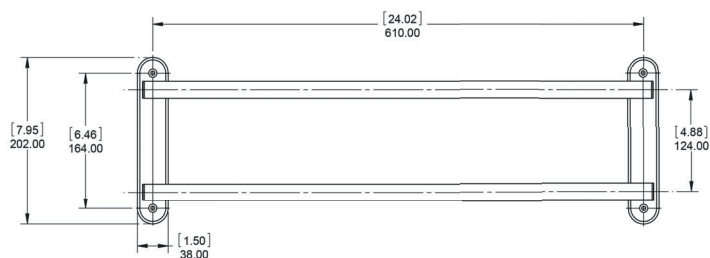
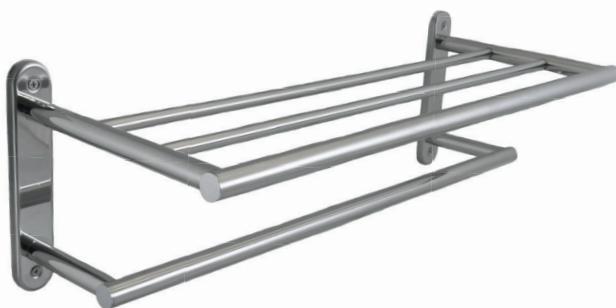
FINISH

BRIGHT POLISHED

## HARDWARE INCLUDED

- FULLY ASSEMBLED 304 STAINLESS STEEL TOWEL SHELF - 1
- STAINLESS STEEL WALL SCREWS - 4
- WALL ANCHORS - 4

## WALL MOUNTED



## INSTALLATION:

Step 1 - Remove from package and rotate clockwise until shelf and bar are perpendicular to one another.

Step 2 - Attach shelf to wall using the provided stainless steel screws.

## WOOD BLOCKING IS THE PREFERRED METHOD OF INSTALLATION



Limited Warranty:

Preferred Bath Accessories Inc. warrants to the purchaser that the product will be free from defects in material and workmanship. If the product does not comply with this warranty, Preferred Bath Accessories Inc. will repair or replace the product or, at Preferred Bath Accessories Inc's. option, refund the purchase price. The limited warranty period is for the lifetime of the product. Limitations on the Warranty: The warranty does not cover, normal wear and tear, product abuse, neglect, improper installation or maintenance. Purchaser Requirements: If this product does not meet Preferred Bath Accessories Inc's. warranty, return the product (postage prepaid) to the place of purchase with proof of purchase and a written claim briefly describing the defect. You may be required to provide other information or evidence of the defect.