

400-WS-LH-3222-NWS

L-SHAPED LEFT HAND FOLD DOWN SHOWER SEAT WALL SUPPORT

VERSABLE
DESIGNS

Construction

- 304-SS Frame
- Padded Naugahyde wrap top

Benefits

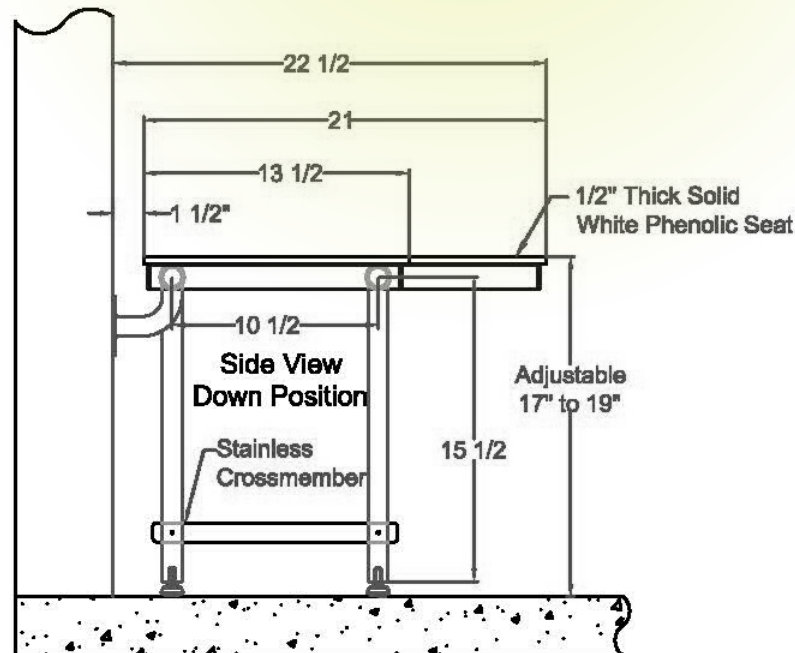
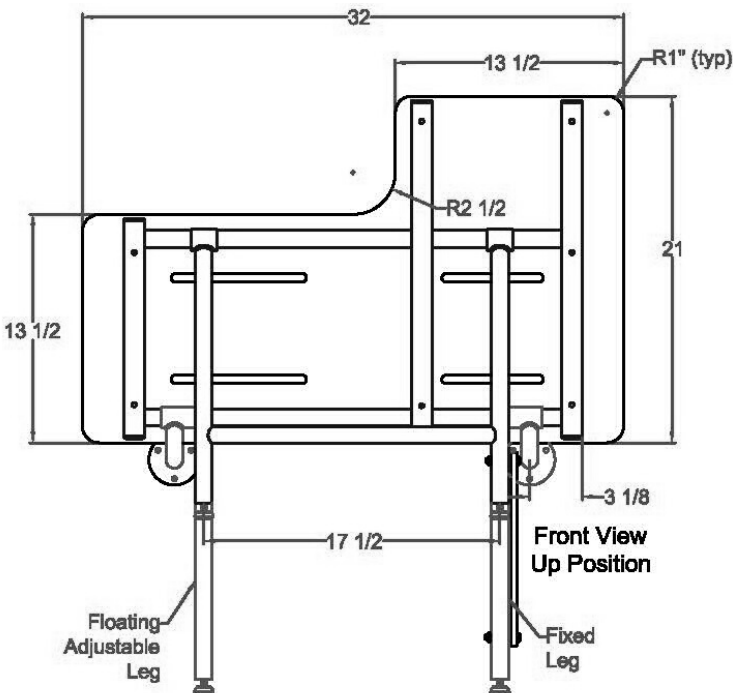
- ADA Compliant
- Supports 500 lbs with proper installation
- Adjustable feet
- Easily folds up out of the way when not in use
- No assembly required

Installation

- Use frame to mark holes
- Use 304 SS screws to secure into wood blocking
- Adjust feet to proper height
- Installation hardware included



32" x 22"



**ENABLING
INDEPENDENCE**

(877) 853-7816

sales@versabledesigns.com

WWW.VERSABLEDESIGNS.COM