

# 400-FD-RH-2622-PWS

## L-SHAPED RIGHT HAND FOLD DOWN SHOWER SEAT W/LEG SUPPORT

**VERSABLE**  
**DESIGNS**

### Construction

- 304-SS Frame
- Solid Phenolic Top

### Benefits

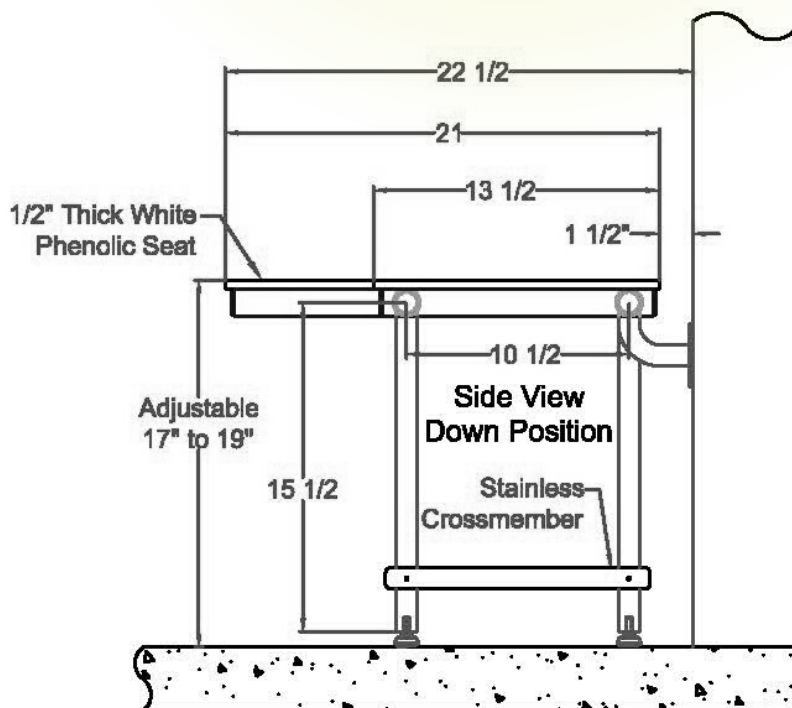
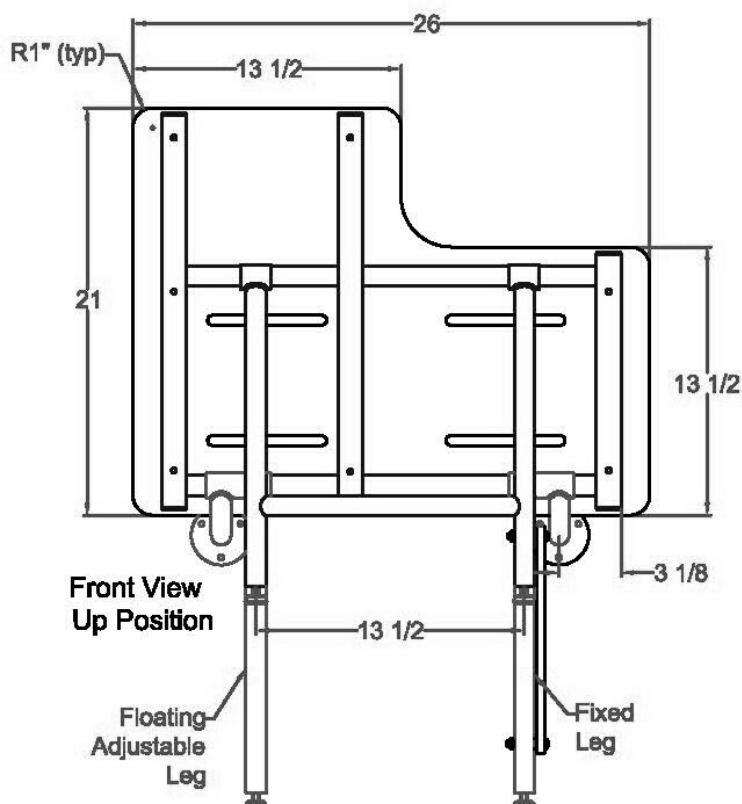
- ADA Compliant
- Supports 500 lbs with proper installation
- Adjustable feet
- Easily folds up out of the way when not in use
- No assembly required

### Installation

- Use frame to mark holes
- Use 304-SS screws to secure into wood blocking
- Adjust feet to proper height
- Installation hardware included



26 x 22



**ENABLING  
INDEPENDENCE**

(877) 853-7816

[sales@versabledesigns.com](mailto:sales@versabledesigns.com)

[WWW.VERSABLEDESIGNS.COM](http://WWW.VERSABLEDESIGNS.COM)