

400-WS-LH-3222-PWS

L-SHAPED LEFT HAND FOLD DOWN SHOWER SEAT WALL SUPPORT

Construction

- 304-SS Frame
- Solid Phenolic Top

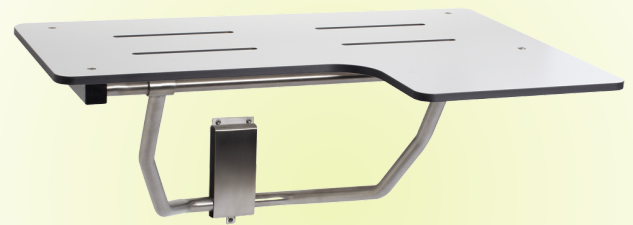
Benefits

- ADA Compliant
- Supports 250lbs with proper installation
- Easily folds up out of the way when not in use
- No assembly required

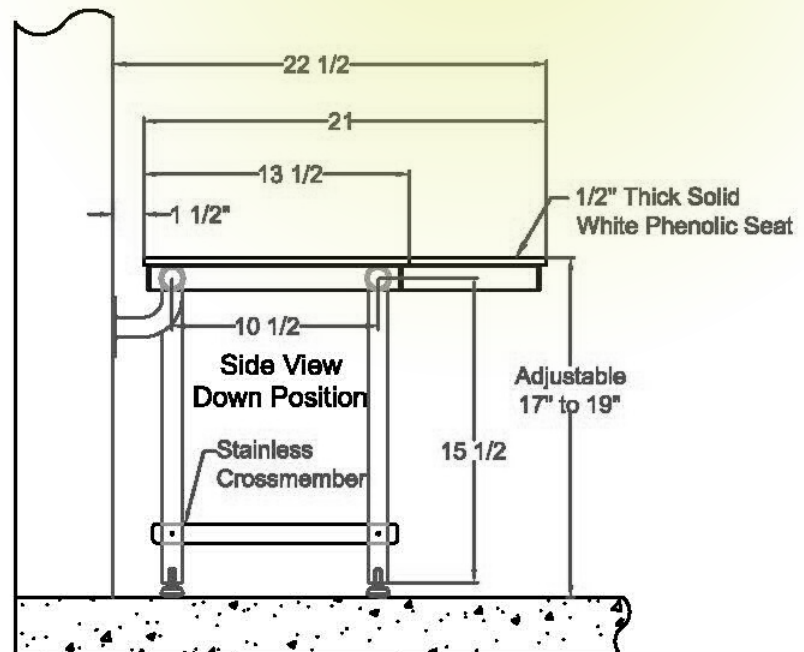
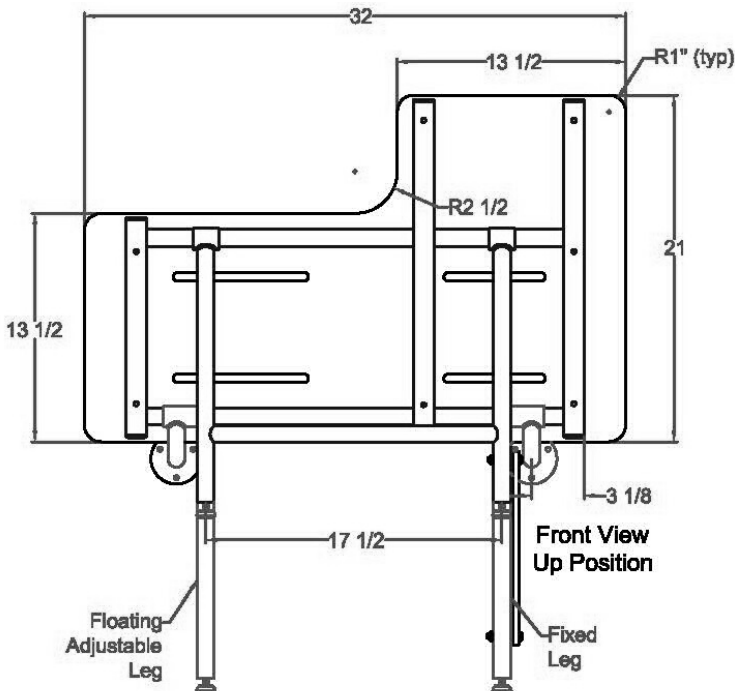
Installation

- Use flange brackets to mark holes to proper seat height and secure into wood blocking using 304-SS screws
- Place lower wall mount bracket around support frame and lower seat to level position and attach lower wall mount bracket to wall using 304-SS screws
- Installation hardware included

VERSABLE
DESIGNS



32" x 22"



**ENABLING
INDEPENDENCE**

(877) 853-7816

sales@versabledesigns.com

WWW.VERSABLEDESIGNS.COM